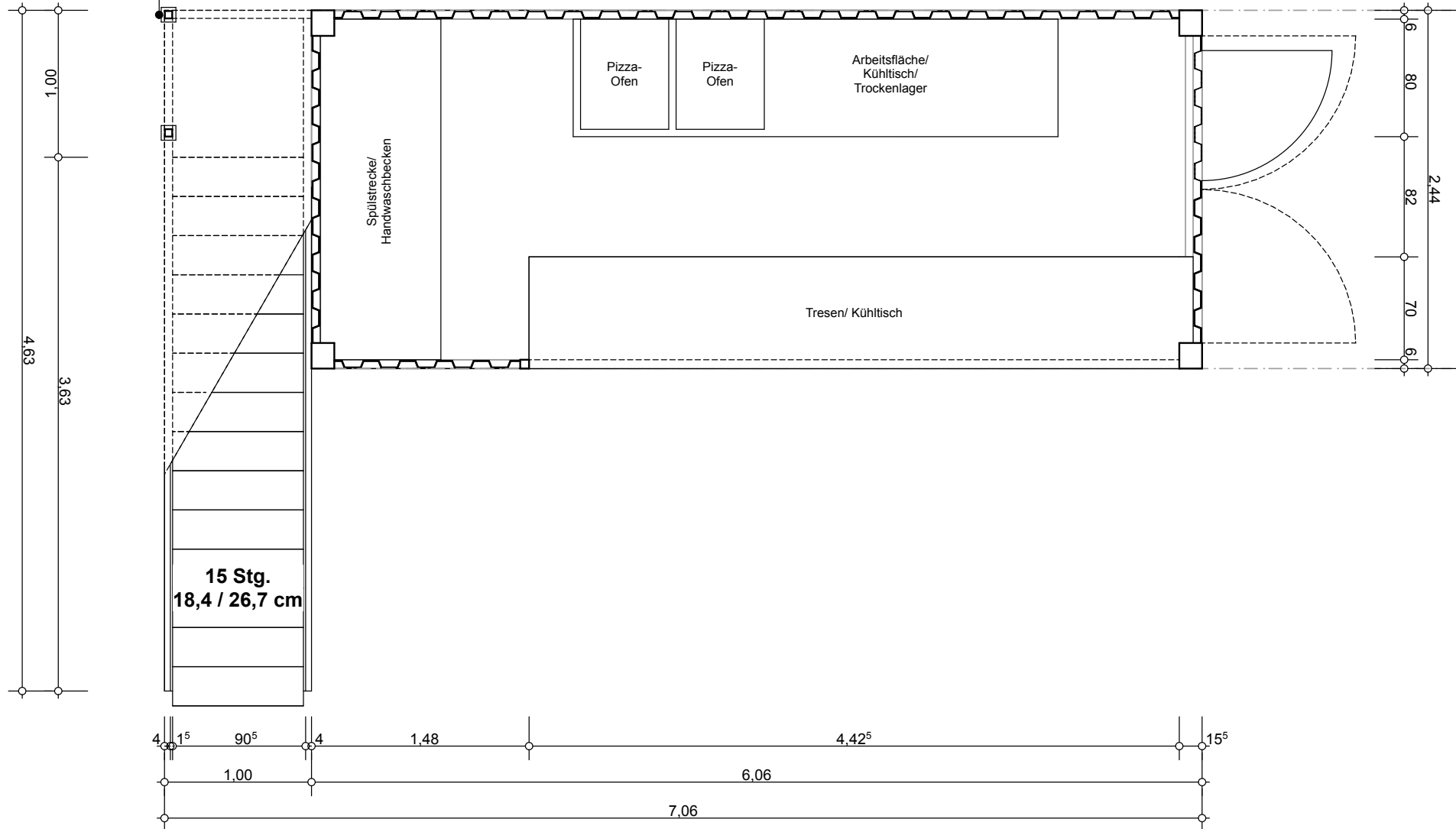
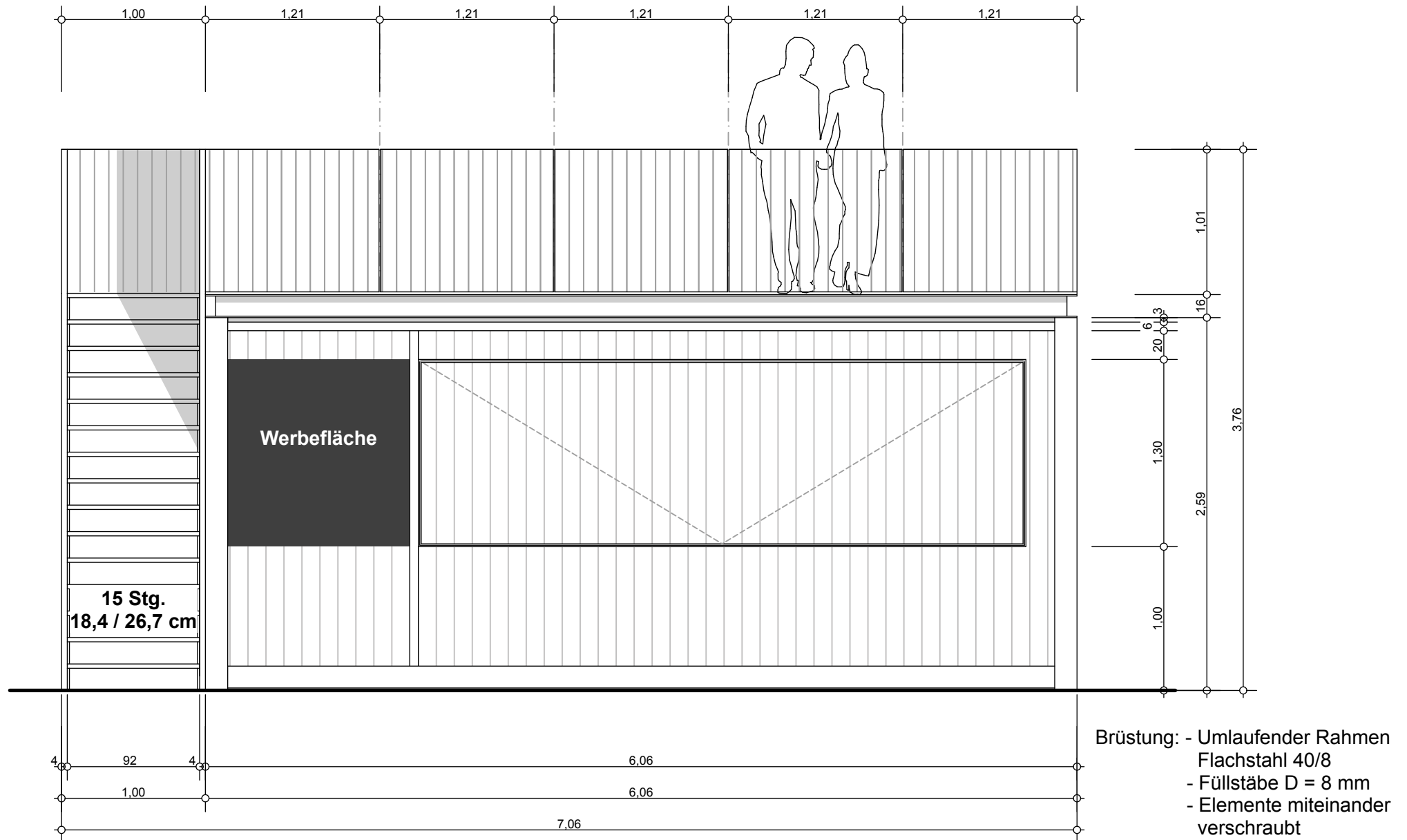


FOOD CONTAINER

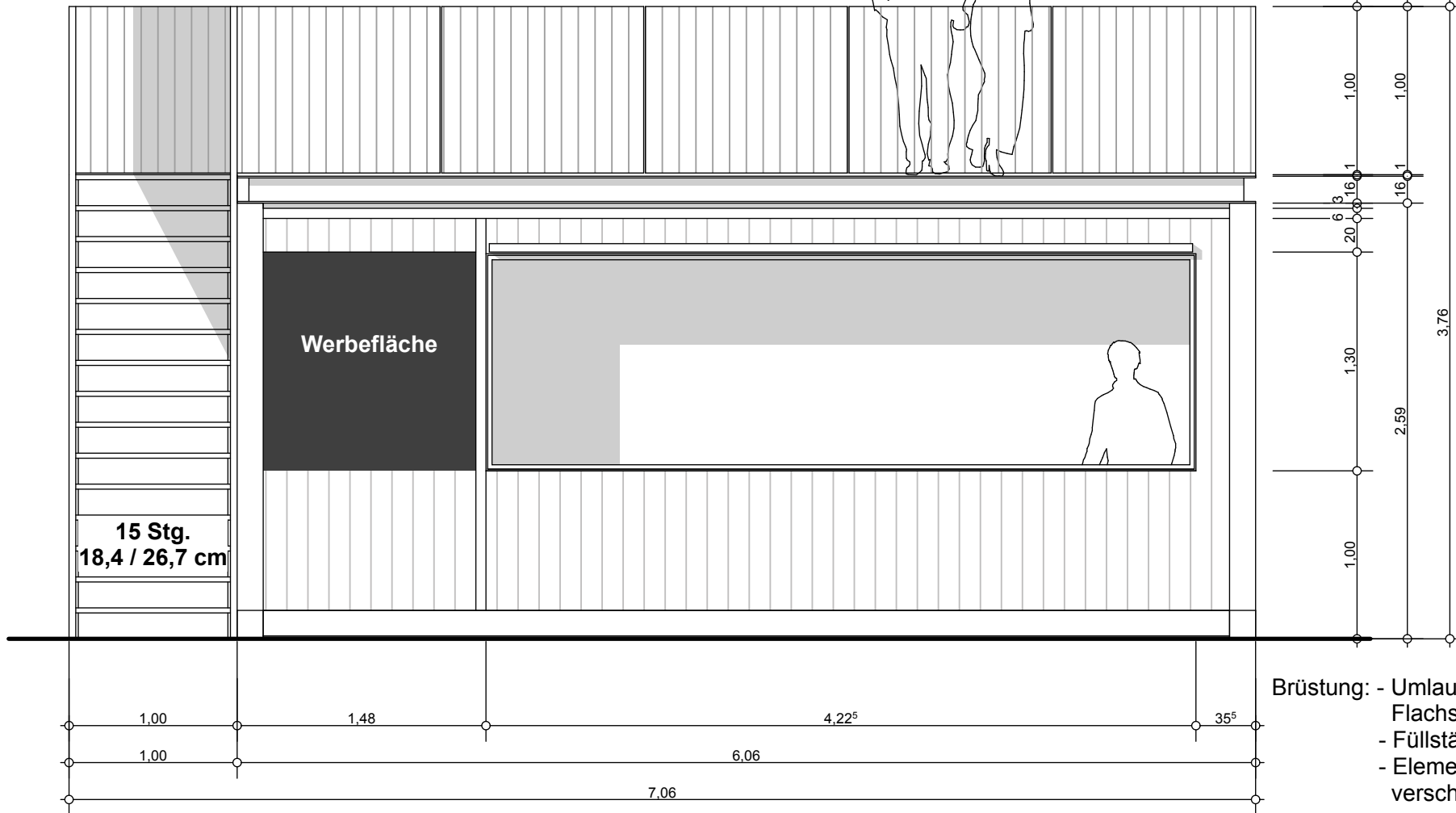
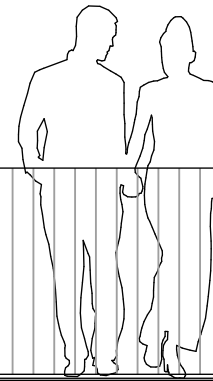
Quadratrohr nach DIN 2395
50 x 50 x 3 mm
auf höhenverstellbaren Füßen



FOOD CONTAINER



FOOD CONTAINER



- Brüstung: - Umlaufender Rahmen
Flachstahl 40/8
- Füllstäbe D = 8 mm
- Elemente miteinander
verschraubt

FOOD CONTAINER

